

State of Rhode Island and Providence Plantations

Budget



Fiscal Year 2016

Volume IV – Public Safety, Natural Resources and Transportation

Gina M. Raimondo, Governor

Agency

Rhode Island Emergency Management Agency

Agency Mission

The mission of the Rhode Island Emergency Management Agency (RIEMA) is to reduce the loss of life and property for both natural and man-made incidents by utilizing an all hazards approach to prevention, protection, mitigation, response, and recovery while providing leadership, assistance, and support to regional, state, and local entities.

Agency Description

RIEMA is responsible for establishing, sustaining and coordinating the resources of the Federal, State, local governments, non-governmental organizations and the private sector to effectively meet the challenges faced during a natural and/or man-made incident. This will be accomplished by the Executive Director through the Governor's authority under R.I.G.L 30-15. The organization's primary goal is to create and oversee a statewide system with an all hazards approach to emergency management and homeland security. RIEMA is also responsible to strengthen the thirty-one (31) core capabilities outlined by the National Preparedness Goal as established by Presidential Policy Directive 8 to reduce loss of life and property within the State of Rhode Island during natural and/or man-made incidents.

The Rhode Island Emergency Management Agency and the State Emergency Operation Center (SEOC) will provide a central location from which all state government at any level can provide interagency coordination and executive decision-making in support of any regional incident or local response. This will be done by: information collection and evaluation, executive decision-making, priority setting, management, coordination & tracking of resources, and interoperable communication facilitation to support any overall response efforts.

Statutory History

R.I.G.L 30-15 created the Emergency Management function. In 1973, the Rhode Island Defense Civil Preparedness Agency was created by R.I.G.L. 30-15, to replace the former Civil Defense Agency. Executive Order No. 83-5 changed the official name to the Rhode Island Emergency Management Agency. The 2015 Legislature established RIEMA as a stand-alone agency. The 2015 Legislature established RIEMA as a stand-alone agency.

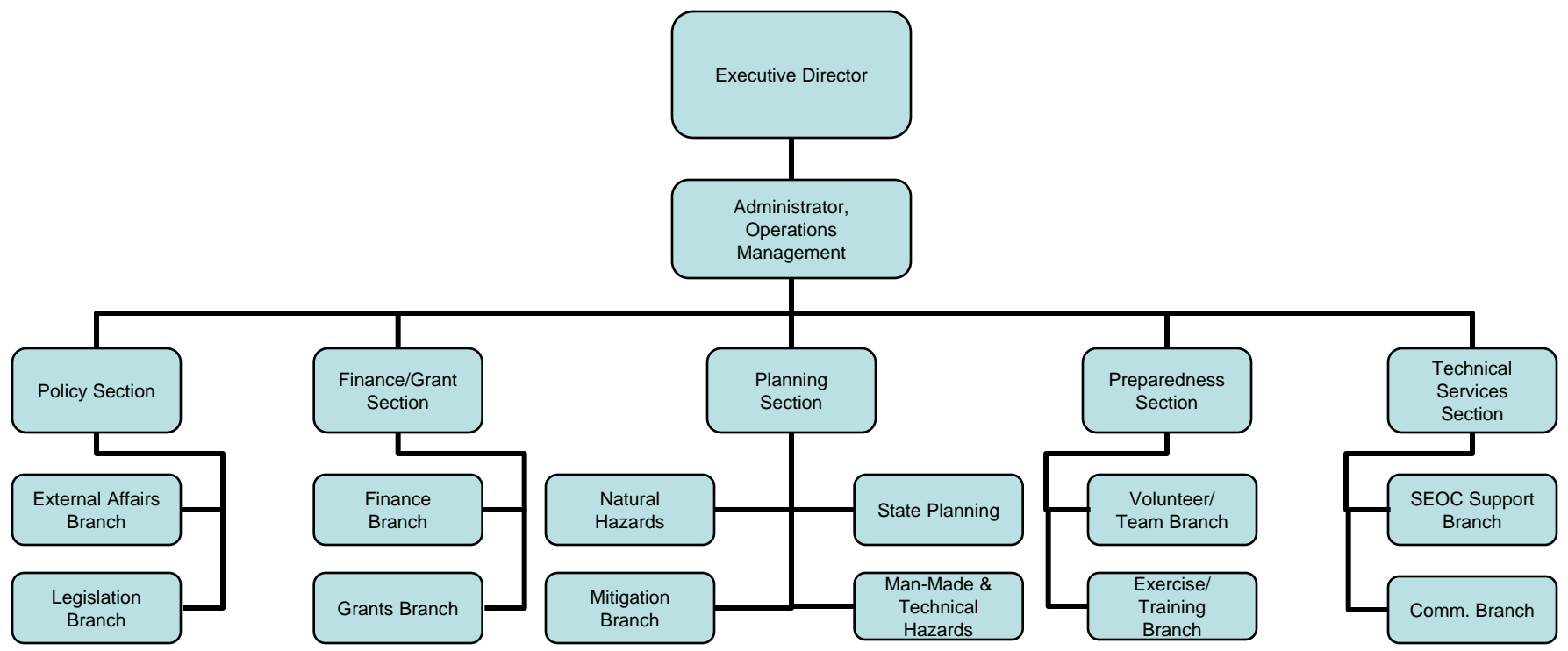
Budget

Rhode Island Emergency Management Agency

	FY 2013 Audited	FY 2014 Audited	FY 2015 Enacted	FY 2015 Revised	FY 2016 Recommend
Expenditures By Program					
Central Management	-	-	20,622,227	23,770,923	18,537,918
Total Expenditures	-	-	\$20,622,227	\$23,770,923	\$18,537,918
Expenditures By Object					
Personnel	-	-	4,427,376	4,056,209	4,243,432
Operating Supplies and Expenses	-	-	1,796,093	3,679,533	3,689,972
Assistance and Grants	-	-	13,950,446	15,573,238	10,596,014
Subtotal: Operating Expenditures	-	-	20,173,915	23,308,980	18,529,418
Capital Purchases and Equipment	-	-	448,312	461,943	8,500
Total Expenditures	-	-	\$20,622,227	\$23,770,923	\$18,537,918
Expenditures By Funds					
General Revenue	-	-	1,959,858	1,861,076	1,766,002
Federal Funds	-	-	18,273,640	21,438,224	16,551,541
Restricted Receipts	-	-	221,729	216,680	220,375
Operating Transfers from Other Funds	-	-	167,000	254,943	-
Total Expenditures	-	-	\$20,622,227	\$23,770,923	\$18,537,918
FTE Authorization	0.0	0.0	32.0	32.0	32.0

The Agency

State of Rhode Island Emergency Management Agency



Personnel

Rhode Island Emergency Management Agency Agency Summary

	Grade	FY 2015		FY 2016	
		FTE	Cost	FTE	Cost
Classified		31.0	2,000,514	31.0	2,065,853
Unclassified		1.0	137,759	1.0	140,514
Subtotal		32.0	\$2,138,273	32.0	\$2,206,367
Overtime		-	50,000	-	50,000
Turnover		-	(\$172,575)	-	(\$97,166)
Subtotal		-	(\$122,575)	-	(\$47,166)
Total Salaries		32.0	\$2,015,698	32.0	\$2,159,201
Benefits					
Payroll Accrual			12,851		13,724
FICA			155,765		166,882
Retiree Health			136,867		130,468
Health Benefits			314,123		336,465
Retirement			493,687		535,783
Subtotal			\$1,113,293		\$1,183,322
Total Salaries and Benefits		32.0	\$3,128,991	32.0	\$3,342,523
Cost Per FTE Position (Excluding Temporary and Seasonal)			\$97,717		\$104,386
Statewide Benefit Assessment			\$87,255		\$93,501
Payroll Costs		32.0	\$3,216,246	32.0	\$3,436,024
Purchased Services					
Clerical and Temporary Services			796,417		780,908
Management & Consultant Services			25,000		25,000
Other Contracts			2,250		1,500
Training and Educational Services			16,296		-
Subtotal			\$839,963		\$807,408
Total Personnel		32.0	\$4,056,209	32.0	\$4,243,432
Distribution By Source Of Funds					
General Revenue		8.1	\$670,174	8.1	\$608,129
Federal Funds		22.1	\$3,198,253	22.1	\$3,443,826
Restricted Receipts		1.7	\$187,782	1.7	\$191,477
Total All Funds		32.0	\$4,056,209	32.0	\$4,243,432